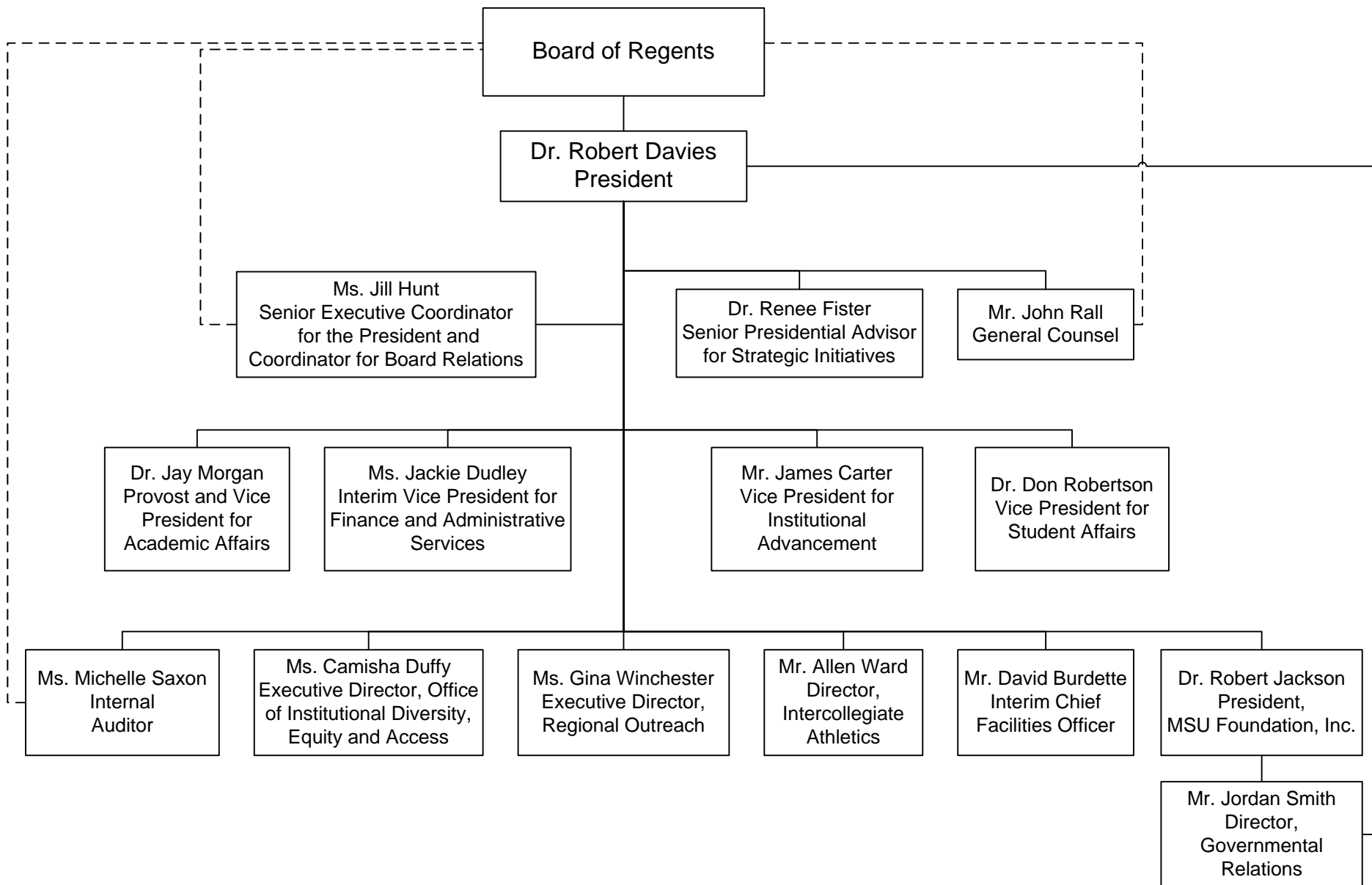
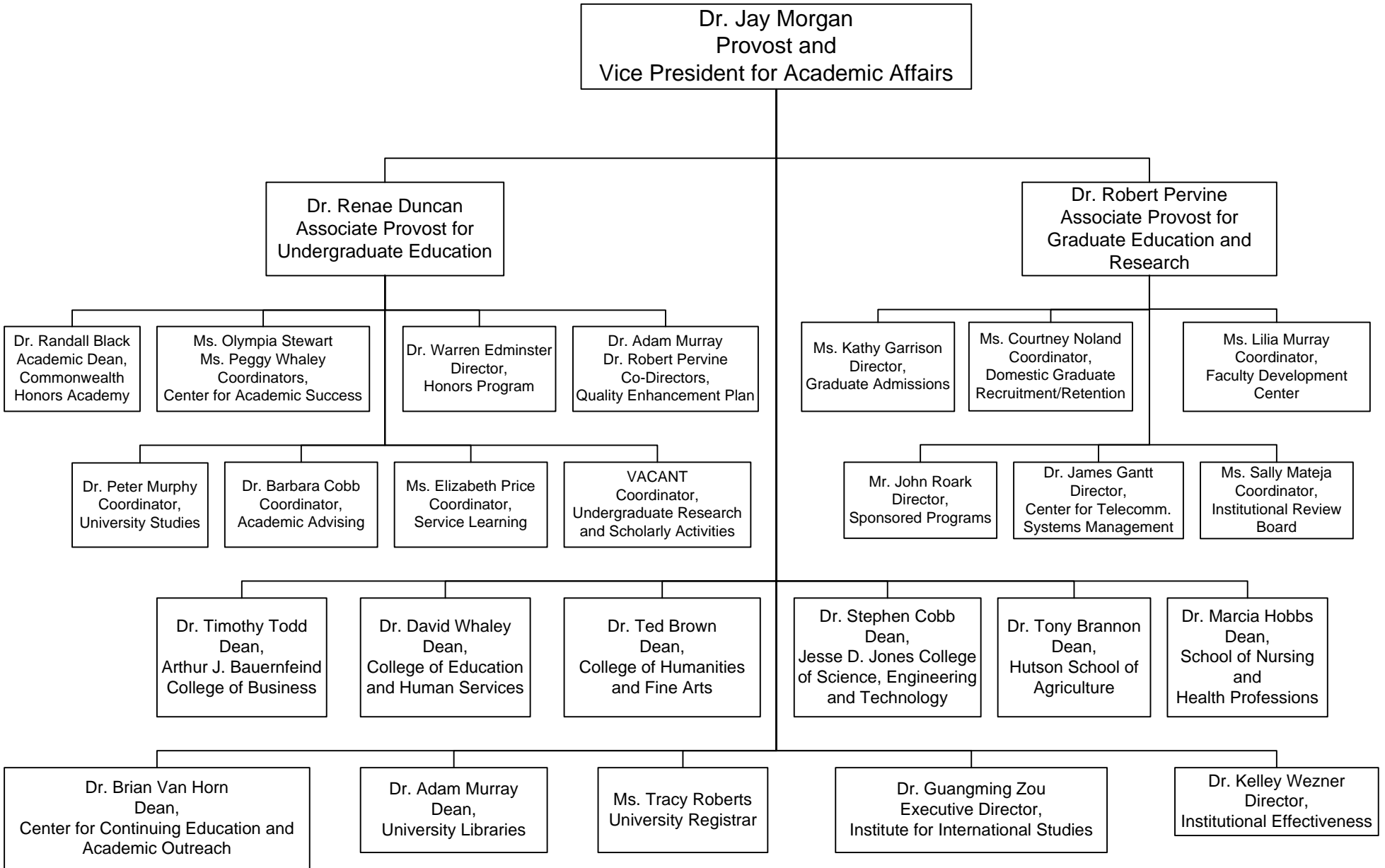


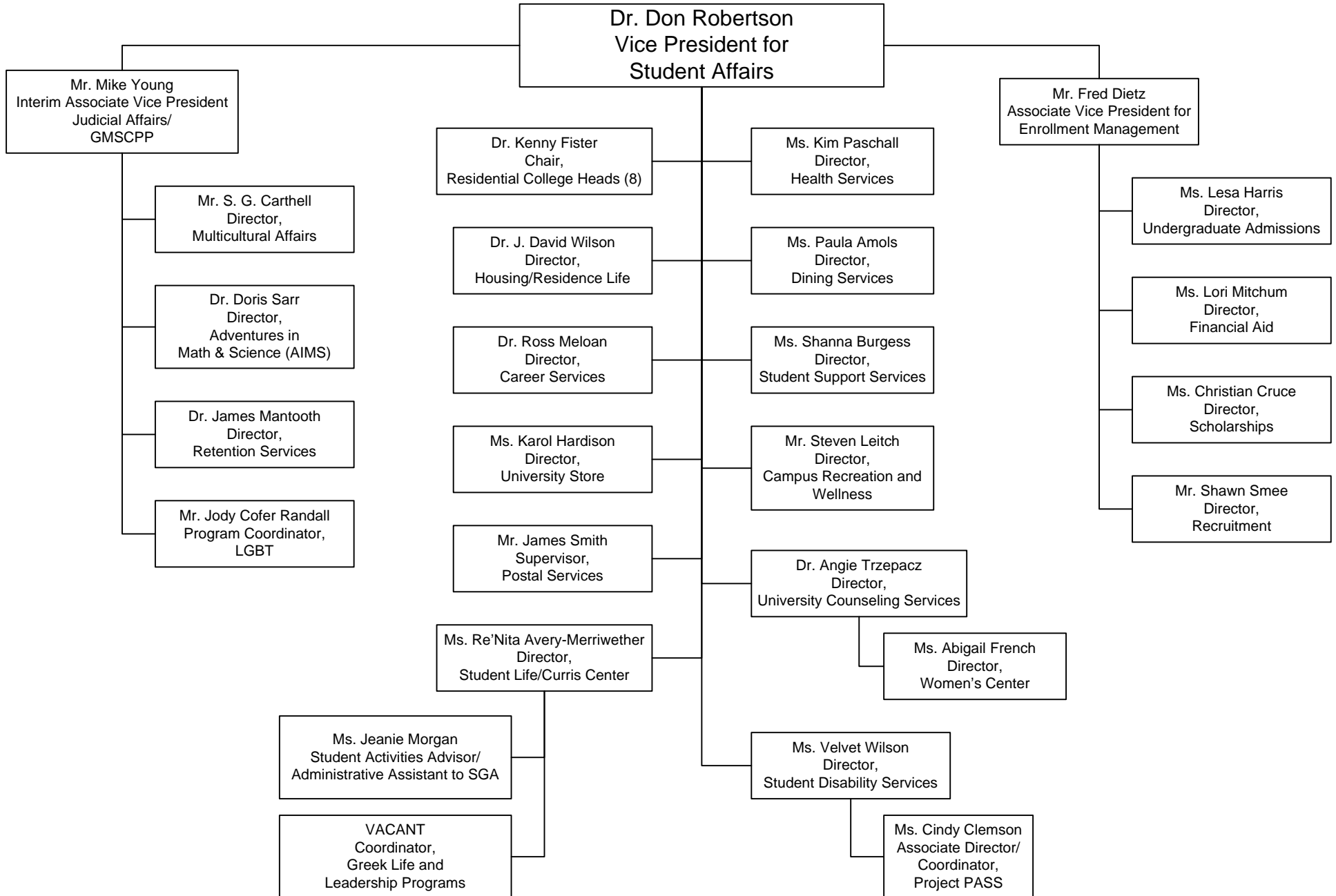
# MURRAY STATE UNIVERSITY ORGANIZATIONAL CHART 2014-2015



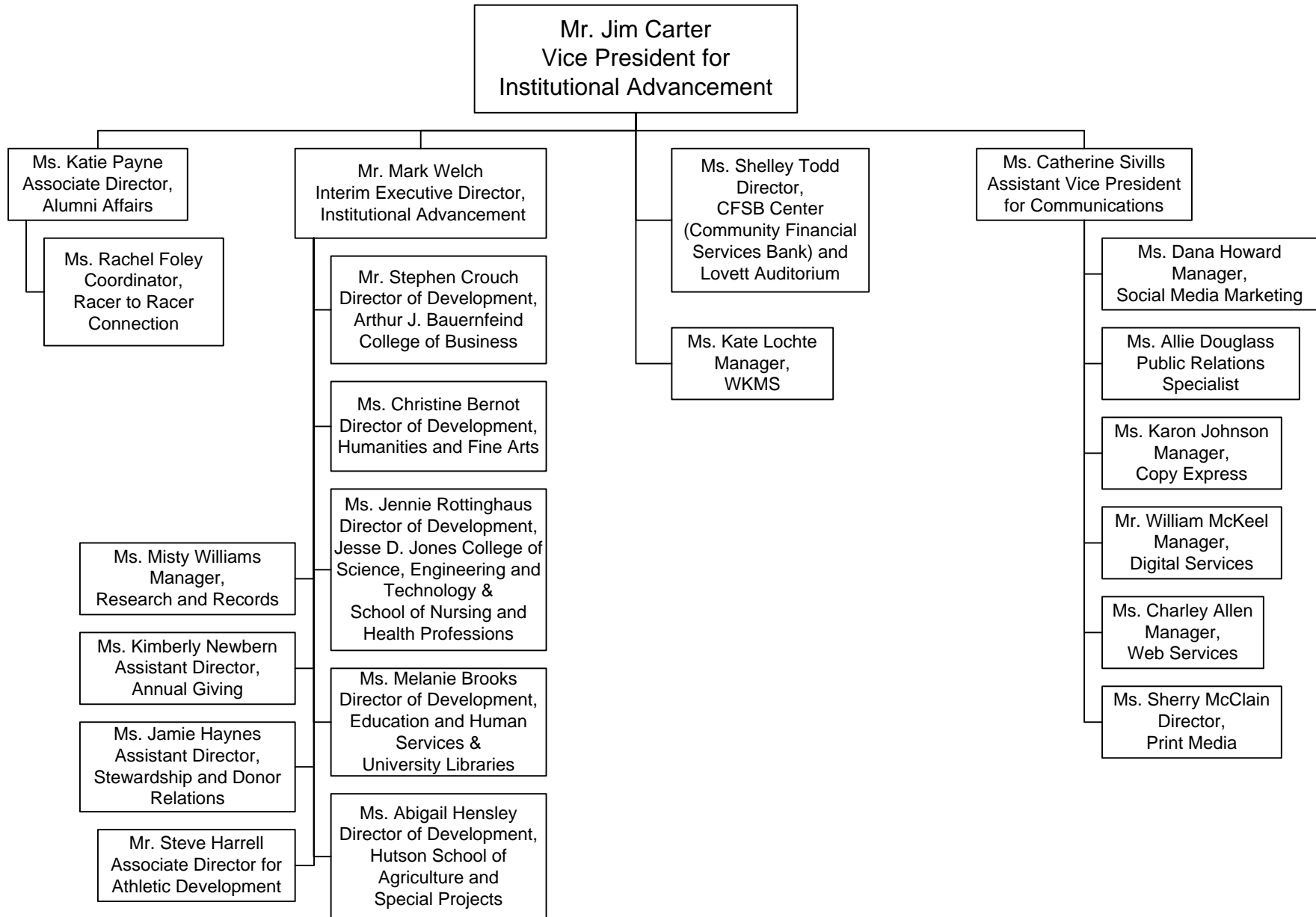
# PROVOST AND VICE PRESIDENT FOR ACADEMIC AFFAIRS 2014-2015



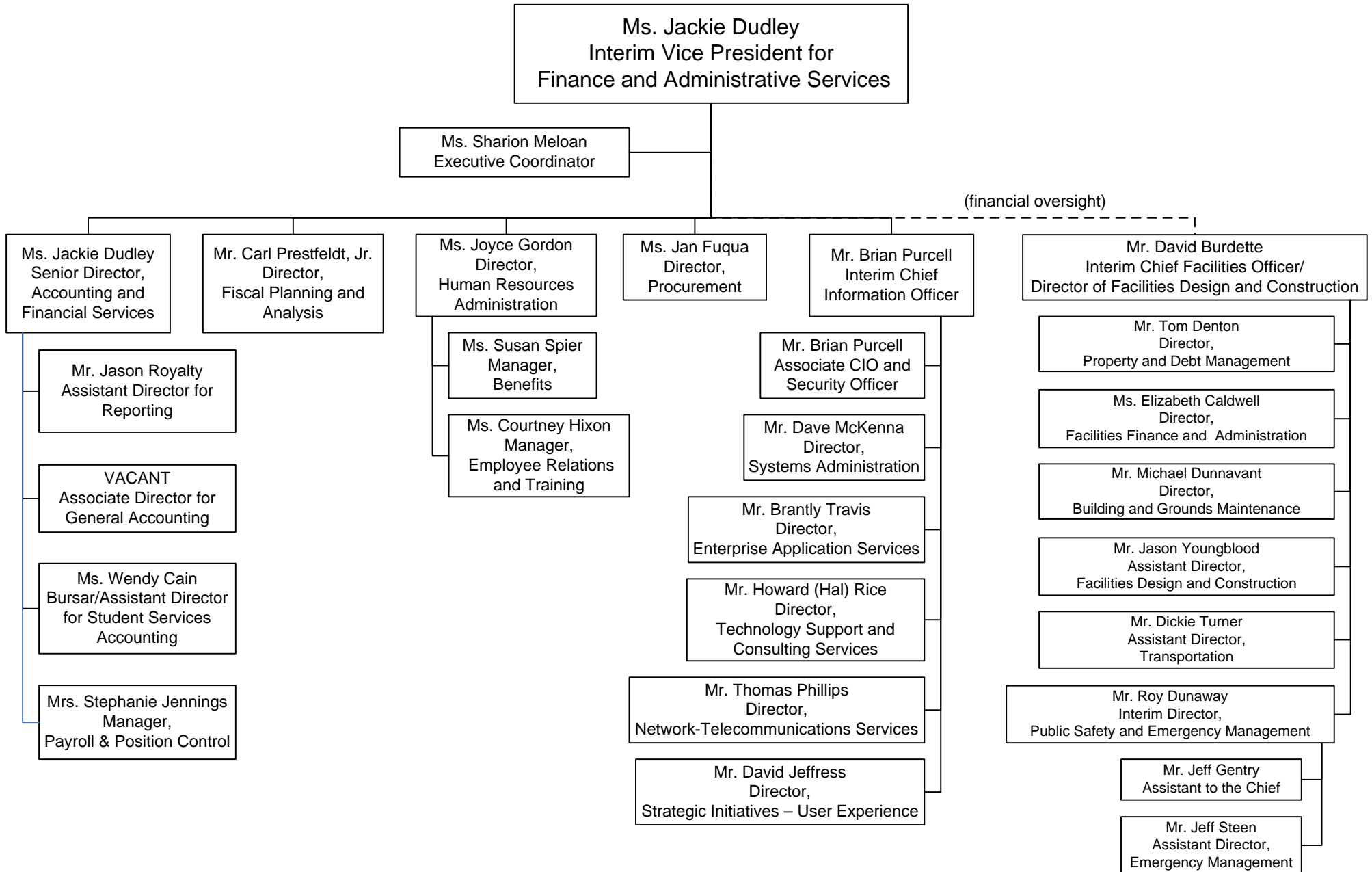
# VICE PRESIDENT FOR STUDENT AFFAIRS 2014-2015



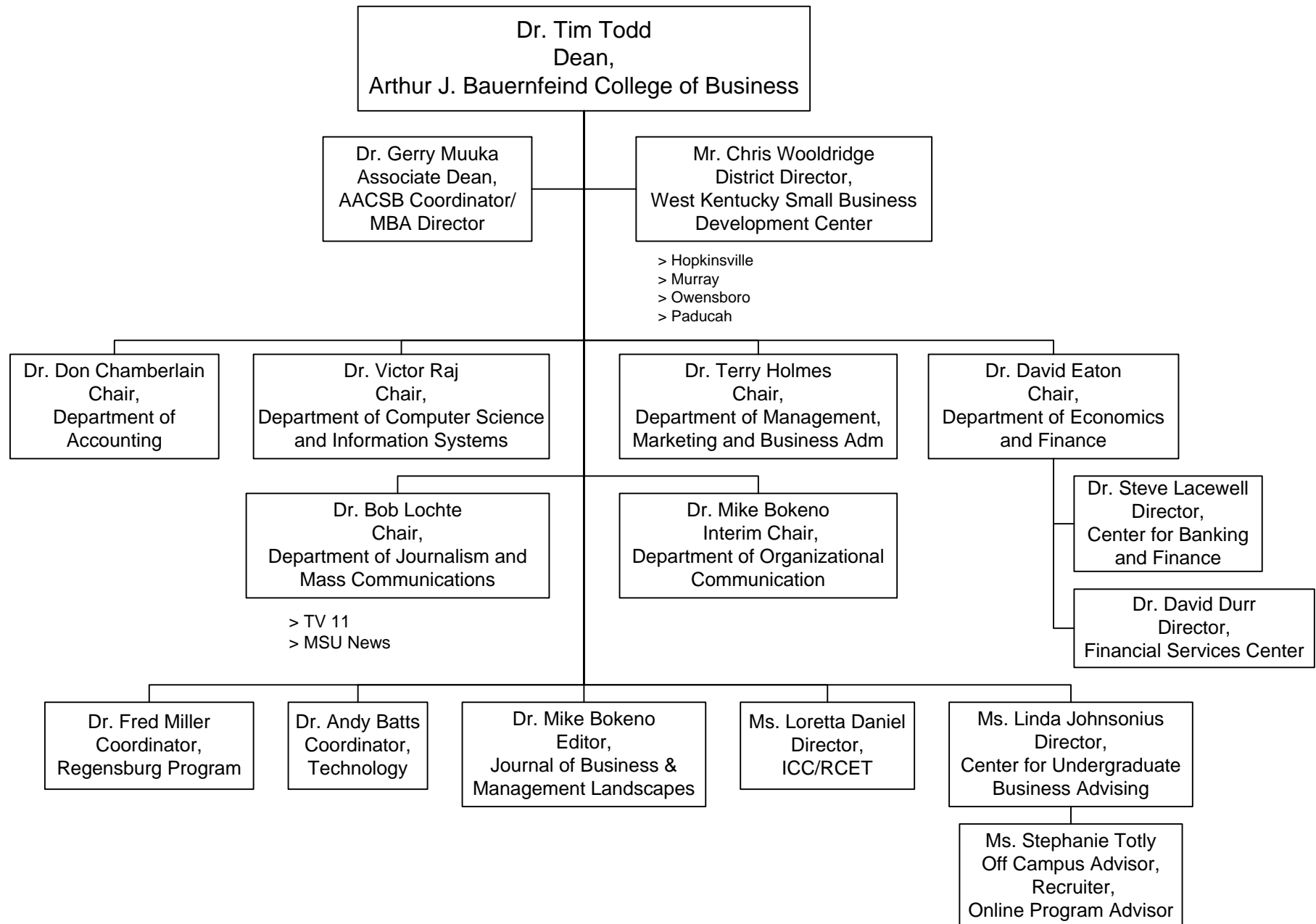
# VICE PRESIDENT FOR INSTITUTIONAL ADVANCEMENT 2014-2015



# VICE PRESIDENT FOR FINANCE AND ADMINISTRATIVE SERVICES 2014-2015



# ARTHUR J. BAUERNFEIND COLLEGE OF BUSINESS 2014-2015



# COLLEGE OF EDUCATION AND HUMAN SERVICES 2014-2015

Dr. David Whaley  
Dean,  
College of Education and Human Services

Dr. Robert Lyons  
Assistant Dean

Ms. Tami Dandeneau  
Coordinator,  
Grants, Finance and Partnerships

Ms. Katherine Farmer  
Coordinator,  
Curriculum Materials Center

Tressa Ross and Raymond Sims  
Center for Recruitment and Retention

VACANT  
Director,  
Kentucky Academy of Technology Education (KATE)

Dr. Jacqueline Hansen  
Chair,  
Department of Early Childhood  
and Elementary Education

Dr. Barbara Washington  
Chair,  
Department of Adolescent,  
Career and Special Education

Dr. Susana Bloomdahl  
Interim Chair,  
Department of Educational  
Studies, Leadership and  
Counseling

Dr. Kelly Kleinhans  
Academic Director,  
Center for Communication  
Disorders

Dr. Kelly Rogers  
Chair,  
Department of Community  
Leadership and Human  
Services

Dr. Alesa Walker  
Director,  
Teacher Education Services  
and Teacher Quality Institute

Ms. Janice Vaughn  
Elementary Advising Center

VACANT  
Director,  
Kentucky Center for School Safety

Speech and  
Hearing Clinic

Nonprofit Leadership Studies

Social Work

Transition HDL  
Nonprofit Concentration

Dr. David Allen  
Director,  
Center for Environmental Education

Dr. Echo Wu  
Center for Gifted Studies

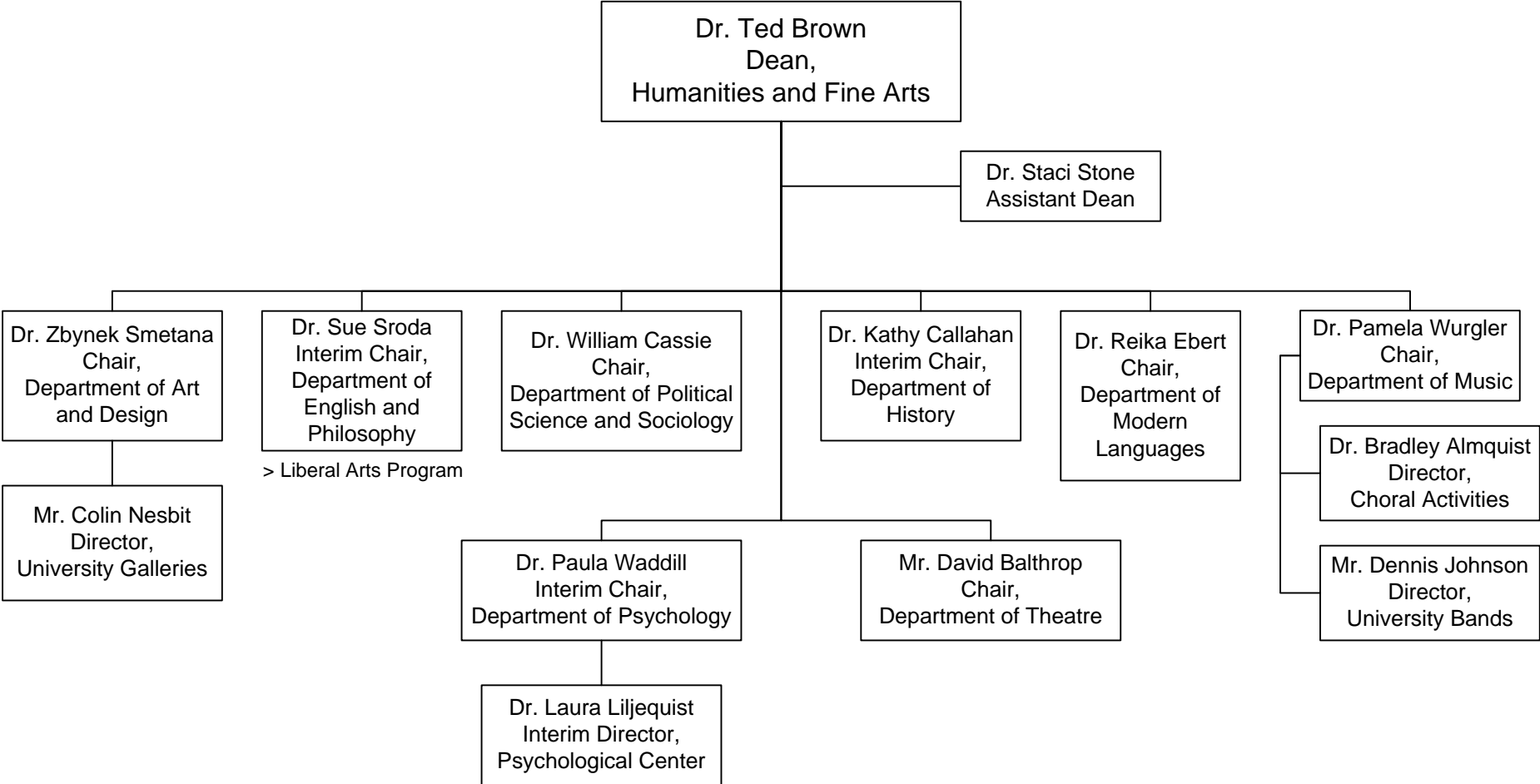
Criminal Justice

Recreation and Leisure Services

Assessment and  
Counseling Clinic

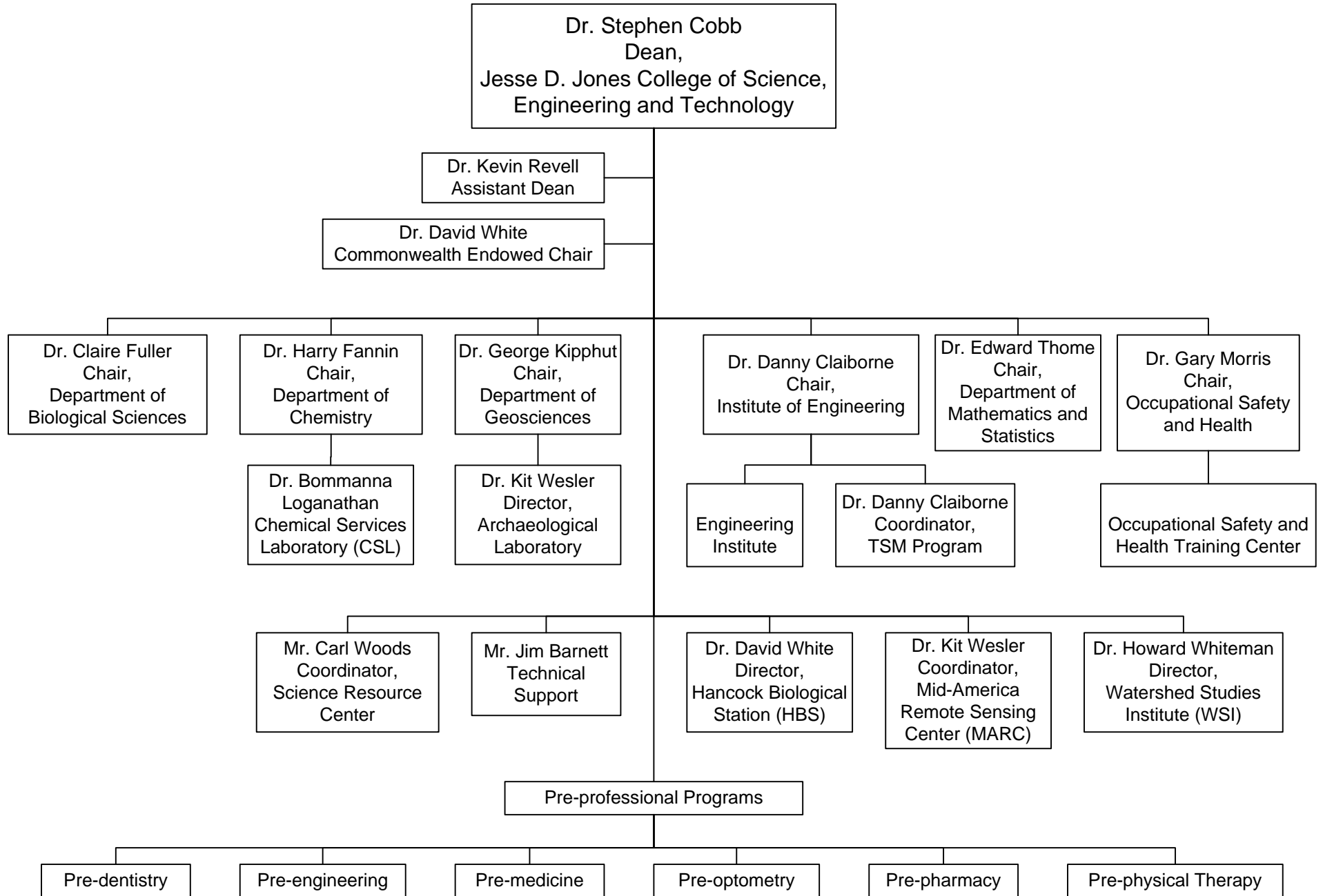


**COLLEGE OF HUMANITIES AND FINE ARTS  
2014-2015**

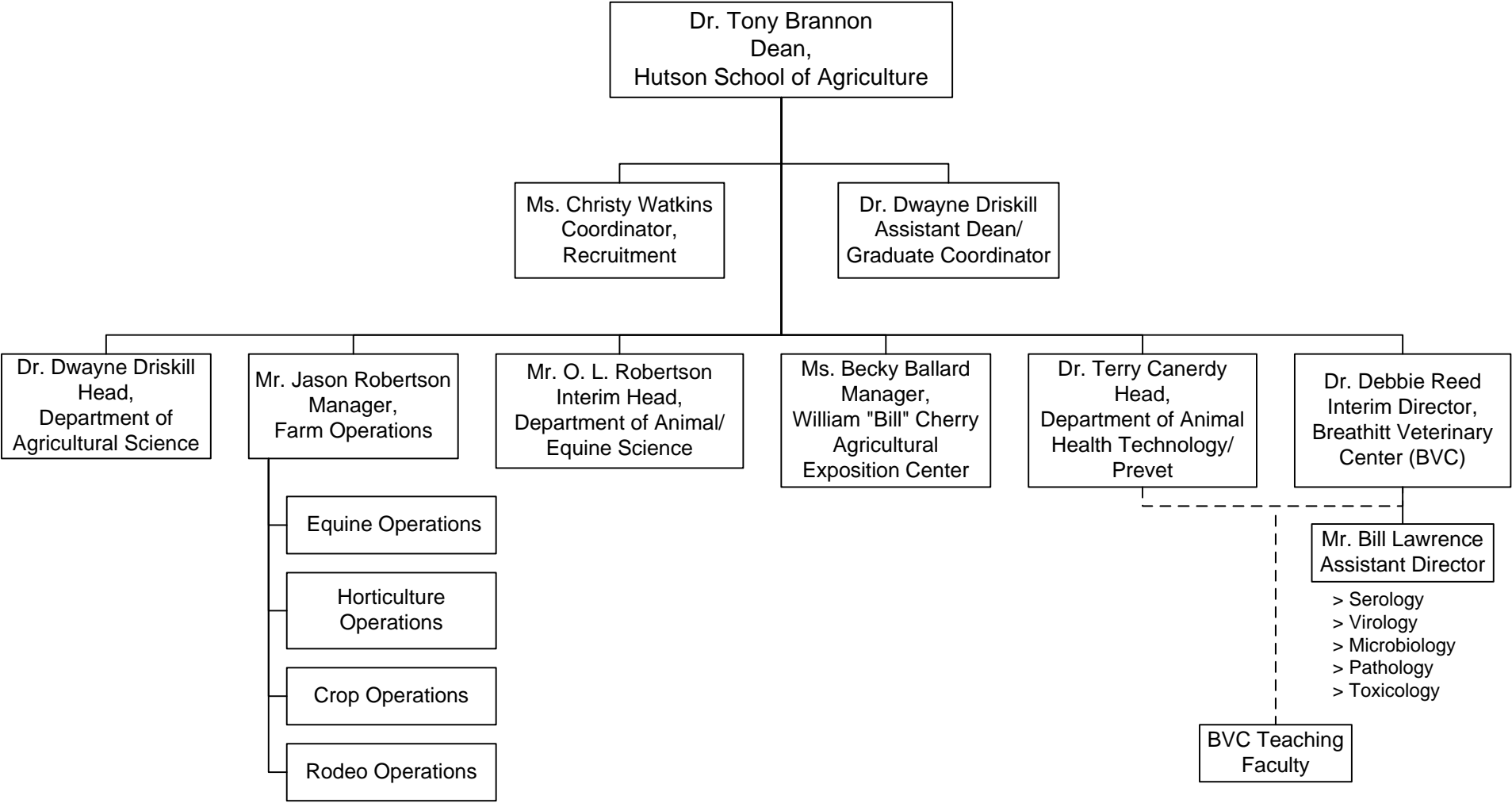




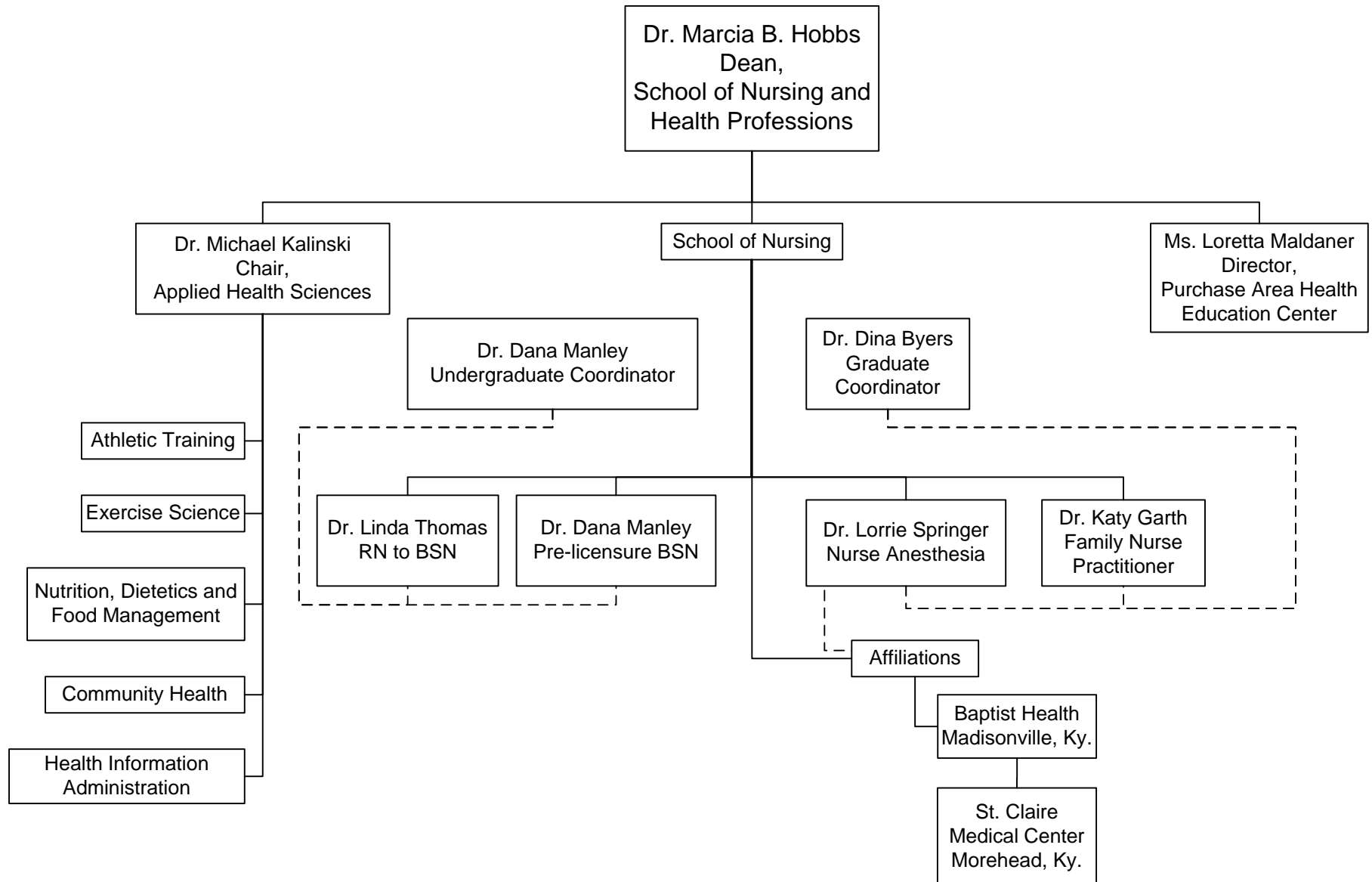
**JESSE D. JONES COLLEGE OF SCIENCE, ENGINEERING AND TECHNOLOGY  
2014-2015**



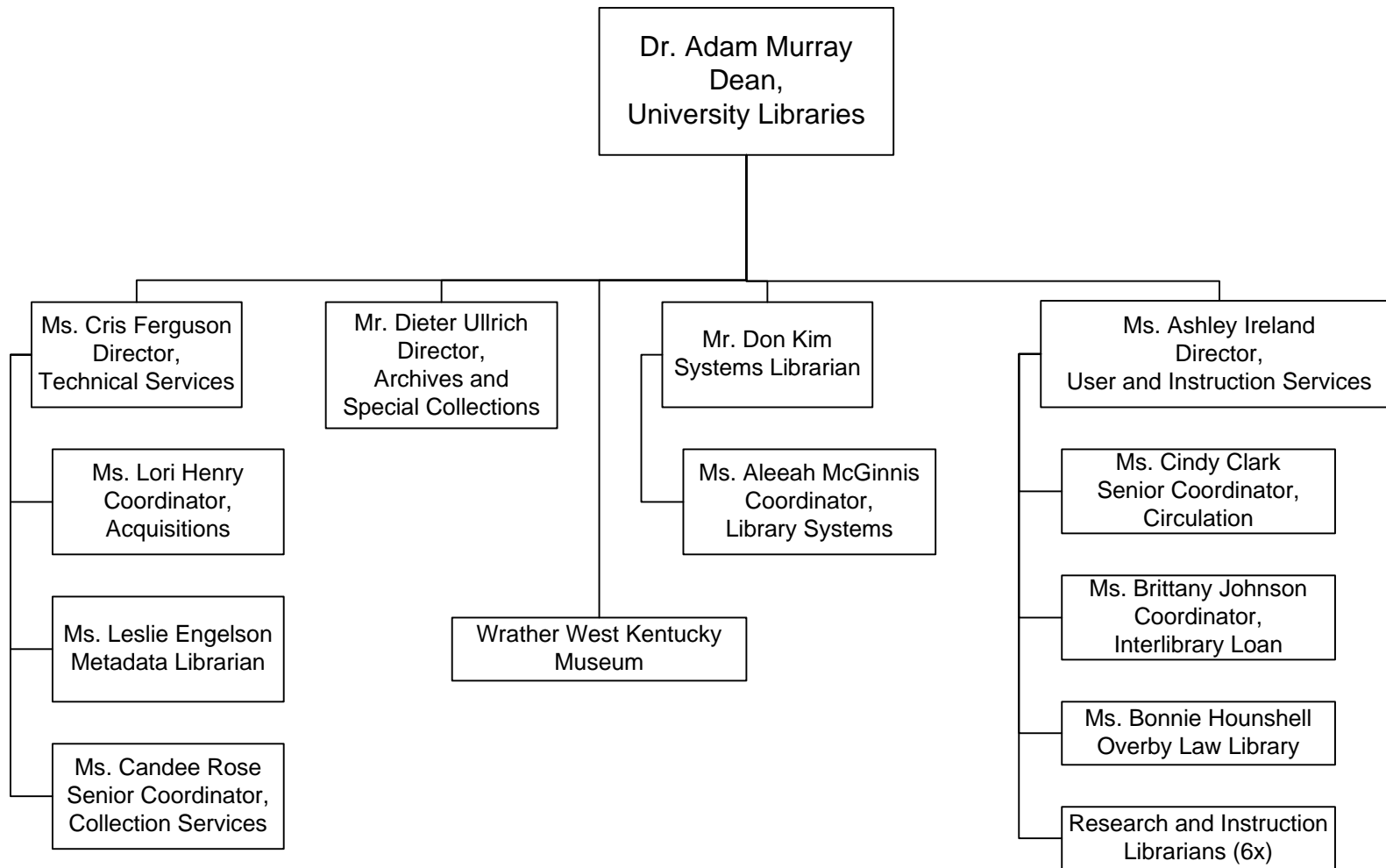
**HUTSON SCHOOL OF AGRICULTURE  
2014-2015**



# SCHOOL OF NURSING AND HEALTH PROFESSIONS 2014-2015



# UNIVERSITY LIBRARIES 2014-2015



**CENTER FOR CONTINUING EDUCATION AND ACADEMIC OUTREACH  
2014-2015**

